

Moving Forward Together

As we leave a challenging year behind, I am extremely proud to look back and reflect on what we have achieved together in 2021. As ever, my huge thanks go to our staff team, volunteers and the Holbeck community, without whom none of our work this year would have been possible.



Our meals service has continued to expand, enabling us to provide hot nutritious meals flexibly for the community whether they have been at home or able to join us at St Matthews.

This year we opened our brand new Charity Shop which has raised crucial funds to support our work, and will soon be offering extended opening hours. Our Community Shop also continues to be incredibly popular, providing access to affordable food for many.

To round off the year, our Trustee and volunteer Ann Hepburn and I were privileged to be invited by Her Royal Highness the Duchess of Cambridge and Kevin Sharp from the Lieutenancy of West Yorkshire to attend a Christmas carol service at Westminster Abbey early in December. We also met with our Patron Hilary Benn MP at the Houses of Parliament who very kindly invited us to join him for lunch. It was a pleasure to share such a special occasion with Ann as a thank you for her wonderful support.

I am very pleased to report that a Community Hub bus and a Stories Hub bus will be based at St Matthews every Tuesday and Thursday. We look forward to

working in partnership with Leeds City Council and thank Susan Murray and her team for enabling us to provide an essential service in the heart of the community of Holbeck.

I look forward to hopefully welcoming a more settled year ahead.

Don't forget if you use social media follow us for the most up to date news and events. We are on Facebook, Instagram, Twitter and LinkedIn

Elissa Newman
Chief Officer



Christmas Festive Fun

After celebrating Christmas differently in 2020, we were thrilled to be able to enjoy the festive period this year with some of our usual traditions and festivities. December began with the return of our celebration lunch at Elland Road, kindly organised by Leeds United. 75 of our clients were treated to a delicious three course meal, along with staff, Trustees, and Hilary Benn MP, Patron of Holbeck Together. Usually an annual tradition held every Christmas, it was even more special to host the lunch after a year off.



We also enjoyed a trip to see Aladdin at the Pantomime, a sit down Christmas lunch at St Matthews, and Christmas wreath making hosted by our very own Ingram Court Craft Group. Although we had to cancel the Big Holbeck Festive Get Together due to new Covid-19 restrictions, we served hot soup, mince pies, tea and coffee to the community instead in the bright winter sunshine.

Thanks to many kind donations, we delivered 130 hampers to our clients the week before Christmas. To celebrate Christmas Day, we served a sit down lunch for 38 clients at St Matthews complete with turkey, all the trimmings and lots of festive cheer.



Huge thanks to Roy, Nikki, Julie, Ira and Angelika for their hard work and effort in serving a delicious lunch for people who would otherwise have been alone on Christmas Day.

We rounded off the year with a New Year's Eve lunch of roast beef and seasonal trimmings for 30 clients at St Matthews.

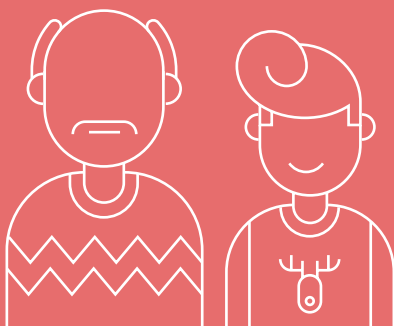




Holbeck's Newest Resident

Our very own Elf helped to spread some festive joy throughout December. Our Elf on the Shelf was seen around Holbeck, volunteering at our activities, helping out in our Charity Shop and making sure Santa arrived safely in Holbeck. Thanks to all of our followers who joined in on social media and helped to give Pixie her name!

We provided festive Recipe Kits and Christmas bauble Craft Kits to people living locally for those who wanted to try their hand at some seasonal home cooking or creating a festive decoration to adorn their tree.



Bringing Generations Together

Thanks to funding from the Time to Shine Intergenerational Small Fund we hosted a series of events and activities for older and younger people in our community to enjoy together last year. The Fund is focused on building community cohesion across age groups.

We kicked off the activities over the summer with trips to Temple Newsam and Roundhay Park, and more recently hosted a Cream Tea afternoon and a Christmas film afternoon. There are plans for the group to meet in the coming year and we hope it will build on the legacy of the Time to Shine funding and live on well into 2022.



3



A Royal Encounter

Our Chief Officer Elissa and volunteer and Trustee Ann were honoured to be invited by Kevin Sharp from the Lieutenancy of West Yorkshire to attend a Christmas carol service in London. Together at Christmas took place at Westminster Abbey to celebrate those who have supported their communities during the Covid-19 pandemic.

They enjoyed performances from Leona Lewis and Ellie Goulding and even brushed shoulders with the host Her Royal Highness The Duchess of Cambridge. The concert was televised on Christmas Eve for all to enjoy. The experience was rounded off by a visit to meet Hillary Benn MP at the Houses of Parliament!

Our New Look Office

Thanks to the magic of interior design experts **Design Tonic**, our office has a brand new look! The team spent two weeks renovating the office to create more space for our growing team as well as to ensure our clients have enough room to continue to visit us safely. **A huge thank you to Amanda and Design Tonic for their hard work and generosity in undertaking this project.**





Celebrating Three Years of Healthy Holidays



We were beginning our journey towards becoming a community anchor for people of all ages, and piloting intergenerational activities as well as clubs specifically for local children.

Over October Half-Term there fast forward three years and Holbeck Together successfully completed its first five day, Half Term holiday camp in October, thanks to funding from Leeds Community Foundation's Healthy Holidays initiative. The project is all about supporting good health and wellbeing for young people and their families during the school holidays.

50 children aged 4-11 took part in a fun-filled week of sports, games, team building and Halloween-themed activities, hosted by our partners, Lane End Primary School. There were freshly cooked, nutritious meals and snacks, and our volunteer Steph ran a breakfast club each morning providing much needed energy before the day's activities began.

We enjoyed pumpkin carving – this time on a much bigger scale! – and film afternoons too, before rounding off the week with a Halloween party complete with spooky outfits and of course, lots of sweet treats.

Healthy Holidays continued over the Christmas break, when children and families enjoyed a week of festive fun. The activities included a buffet lunch at Elland Road kindly hosted by Leeds United, and a very wintery visit to Sundown Adventure Land to enjoy rides, face painting and a visit to Santa.

Thanks to the incredible generosity of Lloyds Banking Group, we were able to provide our families with a Christmas Eve box, a Christmas lunch box with turkey and all the trimmings, and a gift for each child to open on Christmas day. Although last year was the third year we have received Healthy Holidays funding, it was the first time we have organised activities on such a large scale, and marks another important step in our evolution as an organisation. We look forward to strengthening our Healthy Holidays offer in 2022.



Celebrating our Holbeck Heroes

THANK YOU



We hosted a dinner to say thank you to 30 of our wonderful volunteers on Monday 6 December. Kindly hosted by Northern Monk at their beautiful Refectory, volunteers were treated to a delicious three course dinner prepared by chef Ira, and drinks courtesy of Northern Monk to complete the evening. Massive thanks to Northern Monk for their generosity and wonderful hospitality.



THANK YOU

5

Volunteering —

Could you be our newest volunteer?

We are lucky to have a fantastic team of volunteers at Holbeck Together, but we are always looking for more people to help us with our expanding service offer. At the moment we are particularly keen to find Befrienders, Passenger Assistants and Shopping Assistants. Each role represents an excellent opportunity to gain social care related skills and experience.

Befriender

Support older local residents via weekly visits or phone calls that enhance the social wellbeing of often isolated people living alone or with limited social contact.

Passenger Assistant

Support our minibuss drivers to ensure the safety and wellbeing of our clients during regular outings and trips.

Shopping Assistant

Support our clients who are unable to shop independently by shopping and delivering weekly essential items. These roles involve flexible time commitments ranging from a few hours per week, although reliability is essential. We provide training and ongoing support for all of our volunteers.

Find out more about these roles and others that are available on our website at holbecktogether.org/volunteering or contact Chris on 0113 2455553.

6

— Friends of Holbeck Together

Thank You to Our Christmas Supporters

The kindness and generosity of our supporters always astounds us but is never more evident and appreciated than at Christmas time. A huge, heartfelt thank you goes to every single one of our partners and friends that supported us this festive season, including:

Leeds United: for hosting Christmas lunch for our older clients and children and families, and to the Leeds United Academy for sorting and wrapping hampers for our clients

Lloyds Banking Group: for their incredibly generous donation of Christmas gifts for 100 children in the Holbeck community

Printworks: for printing Christmas cards for our clients free of charge

Engie: for a wonderful Christmas hamper

Pat Clapham: for knitting lovely soft toys for young children in the community

As ever, we also extend a huge thank you for our personal and anonymous donations.



Christmas Fundraiser

Jonathan Morgan, pioneer of City Living in Leeds, has held the annual Morgans Christmas Party at Harvey Nichols for nearly 20 years.

After selling the business in 2019, the party took a short break. But as a huge supporter of the third sector in Leeds, Jonathan decided to reinvent the party this Christmas as a fundraiser in support of Holbeck Together and our friends Re:establish. Guests enjoyed an evening of drinks, delicious food, entertainment and a raffle featuring three wonderful prizes kindly donated by Harvey Nichols, who hosted the event at their 4th Floor restaurant.

We are thrilled that £15,467.45 was raised for both charities and pass on a heartfelt thank you to Jonathan for his unwavering support.



True North 2022

Our wonderful partners Northern Monk recently launched True North 2022, a brand new calendar shining a light on Holbeck's rich history. We have worked closely with Northern Monk to assemble a calendar which celebrates the incredible landmarks and historical buildings that make up our local area. All proceeds from the sale of the calendar, which was brilliantly photographed by Mark Newton Photography, will go towards supporting our work in Holbeck.

We are proud and incredibly grateful to continue our collaboration with Northern Monk, who funded its first charity calendar in 2018 which featured local people telling the Holbeck story through their own eyes. Contact the office if you would like to get your hands on a copy.

Clothes Shop

Thank you for all of the donations we have received since our Charity Shop opened earlier this year. This has helped us to keep our shop well stocked and raise crucial funds to support our work in the community.

The shop is open Tuesday, Wednesday and Thursday from 10am-2pm at St Matthews, and this will be extended this year so look out for more details.

THANK
YOU



Thank You National Lottery Players

We joined The National Lottery's #ThanksToYou campaign to say a massive collective thank you to National Lottery players for their colossal contribution to funding good causes across the UK.

National Lottery players have helped to bring some amazing projects to life for Holbeck Together, including our Dance On Group delivered in partnership with Yorkshire Dance.

New year, new career?

We're looking for caring and compassionate people to join our amazing team

Lucy used to care for her mum, Omar worked in a warehouse and Claire was looking to apply her nursing skills somewhere new.

Now they all have a career in social care with Westward Care.

CURRENT ROLES

Registered Nurses
Care Assistants
Deputy Manager
Receptionist



Westward Care

Apply Today

Visit website or scan QR code with your smartphone camera for full details.



Pennington Court

Hunslet Hall Road,
Beeston, Leeds LS11 6TT
0113 228 4040



Southlands

Wetherby Road,
Roundhay, Leeds LS8 2JU
0113 265 5876



Headingley Hall

5 Shire Oak Road,
Headingley, Leeds LS6 2DD
0113 275 9950

westwardcare.co.uk



All staff must be doubly vaccinated, be prepared to take Covid tests 3 x week and wear masks and PPE whilst in work.

Holbeck Together – your Community Hub

We are delighted to announce that we are working with Leeds City Council as the designated partner for the Mobile Community Hub for Holbeck.



What does this mean?

Leeds City Council is committed to making as many of its services as accessible as possible. Therefore, every Tuesday (9.30-3.30pm) and Thursday (10.00-3.30pm) you can pop down to St Matthews and visit the Community Hub bus to get advice and support on a variety of Council services. The Story Bus (for under 5's and their carers) will also be visiting St Matthews every Thursday from 10-11.30am.

What types of support can I get?

- Council housing – Repairs, Rent advice, Applications, Bidding
- Council tax - support with applications, payment arrangements, direct debits
- Reporting anti-social behaviour
- Employment Support – writing a CV, Job search, Application
- Support, Interview Skills, Advice on Training
- Blue badge applications

You do not need to make an appointment as it is a drop-in service. Staff will be adhering to social distancing guidance and taking all Covid-safe precautions. This may mean you have a short wait outside – why not visit St Matthews where you can always pop in for a cuppa while you wait!

Your Community Café is Back

Our Community Café at St Matthews is currently open every Thursday from 9.30am-1.00pm. We have a range of hot sandwiches available including bacon, sausage, and egg from as little as £1, including tea, coffee or juice too.

Outreach meals

We offer delicious home cooked meals five days a week- made by us, delivered to you. If you would like to order any meals, or find out more, please call our office on 0113 245 5553.

Community Support

At Holbeck Together we support people living locally with a range of issues including housing, welfare and benefits, financial concerns, and mental and physical health and wellbeing. Claire, our Operations and Services Officer, and Nikki, our Community Engagement Worker, along with the rest of the team, are here to help you stay healthy, warm, safe and connected, whilst living independently.

We know that all of our clients have varied requests for information so we will work with you to support you in the most suitable way. Claire and Nikki can meet with you in the office, or in your home if you prefer. The best way to do this is to make an appointment by calling the office on 0113 245 5553.



Have Your Say

We would like to hear feedback from our clients about the services we currently have on offer, and ideas for how they can be improved. If you are interested in joining a group to discuss this, please call the office and speak to Matthew.

The feedback sessions will take place on the last Wednesday of the month from 10:00am – 11:30am at Ingram Gardens Community Centre. Tea, coffee and refreshments will be provided. We hope you can join us.

I WOULD
LIKE TO
SEE...

CAN WE
HAVE...

Strength & Balance Programme

From March, you will have the chance to join a brand new Strength and Balance Programme at St Matthews, led by Active Leeds. It is a structured programme of exercise designed to increase confidence and make every day activities feel easier and safer.

The sessions will take place every Tuesday from 1 March from 10.00-11.30am. Contact Active Leeds on 0113 378 3680 or email health.programmes@leeds.gov.uk to enquire about booking a place.



Intergenerational Project with St Luke's

Are you interested in supporting and engaging young people at school through conversation about their work and other interests? We are launching a weekly 'show and tell' afternoon for 12 weeks beginning in April, where young people will have the opportunity to share school projects and other interests.

There will also be a bonus of free tea, coffee and cake!

To register your interest and for further details, call or email Matthew on 0113 245 5553 or matthew@holbecktogether.org



Spotlight on Activities

Weekly Activities Schedule



Don't forget to BOOK
Call Matthew on 0113 245 5553

Monday

Coffee Morning. 10:00am-12:00pm. £1.00

Dinner Jackets or Pie & Peas Lunch Delivery. 12:00pm-1:00pm. £2.50

Parents & Tots Coffee Afternoon at Ingram Gardens Community Centre. 1:30pm-2:30pm.



Tuesday

Shopping to Morley Town Centre. 9:30am pick-up. 1:30pm return. £4.50

Charity Shop. 10:00am-2:00pm

Coffee & Connect. 10:00am-11:30am

Two course lunch delivered to your door. 12:00pm-1:00pm. £4.00

Three course lunch. 12:00pm-1:30pm. £5.00

(Door-to-door transport available from 11:00am onwards - £3.50)

Yellow Birds Singing Group. 2:00pm-3:00pm. £2.00 per session



Wednesday

Coffee Morning at Ingram Court Community Room 10:00am-12:00pm. £1.00

Charity Shop. 10:00am-2:00pm.

Three Course Lunch at Ingram Court Community Room. 12:00pm-1:30pm. £5.00

(Door-to-door transport available from 11:00am onwards - £3.50)

Two Course Lunch Delivered to your door. 12:00pm-1:00pm. £4.00

Craft Afternoon at Ingram Court Community Room. 1:30pm-3:30pm

Thursday

Shopping to Morley Town Centre. 9:30am pick-up. 1:30pm return. £4.50

Holbeck Together Community Café. 9:30am – 1:00pm.

Charity Shop. 10:00am-2:00pm

Holbeck Together Community Shop. 10:30am -2:00pm.

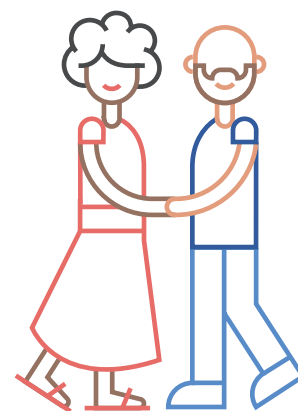
Two course lunch delivered to your door. 12:00pm-1:00pm. £4.00

Line Dancing. 11:30am-12:30pm. £2.00 per session

Table Tennis Afternoon. 1:00pm-2:30pm. £2.00 per session

Community Café. 9.30am-1.30pm.

Story Bus. 10am-11.30am. Free



Friday

Coffee Morning 10:00am-12:00pm. £1.00.

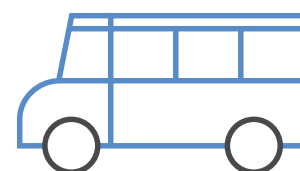
Yorkshire Dance – Dance On. 10:00am-11:00am.

Fish & Chips delivered to your door. 12:00pm-1:00pm. £3.50-£5.00

Fish & Chip Lunch. 12:00pm-1:30pm. £5.00-£7.00

(Door-to-door transport available from 11:00am onwards - £3.50)

Bingo Afternoon. 1:30pm-3:00pm



Sunday

Two course Sunday Lunch. 12:00pm-1:30pm. £4.00 per meal

(Door-to-door transport available from 11:00am onwards - £3.50)

Two course Sunday Lunch delivered to your door. 12:00pm-1:00pm. £4.00 per meal

February 27th & March 27th only

Key Dates

All events are subject to the continued success of the UK's Covid-19 road map out of lockdown. Each event has limited availability and therefore must be booked in advance to adhere with the latest Covid-19 guidance.

February

Tuesday 1 February
Chinese New Year Themed Lunch. Outreach Meal Delivery Available £5 meal Transport available from £3.50

Saturday 12 February
Shopping to Crossgates Pick-ups from 9.30am onwards. Return at 1pm. £4.50 return transport.

Tuesday 15 February
Three Course Valentines Day Social Event with Entertainment 12pm-2pm. Free of charge.

Monday 21 February
Pub Meal Outing – Heathfield Farm, Birkenshaw. Pick-ups from 11am. Return 2.30pm. £5 return transport.

Sunday 27 February
Two Course Sunday Lunch at St Matthews. Outreach Meal Delivery Available. £4.00. Transport available from home £3.50.

Monday 28 February
Group Outing to Showcase Cinema. Film, Collection & Return Time TBC. Return transport £5.

March

Monday 7 March
Group Outing – Pub Meal Outing at Toby Carvery, Horsforth and Hollywood Bowl, Kirkstall. Pick-ups from 11am. Return 4.00pm. £5 return transport.

Saturday 12 March
Shopping to Crossgates. Pick-ups from 9.30am onwards. Return at 1pm. £4.50 return transport.

Monday 14 March
Group Outing – Wetherby Whaler, Guiseley. Pick-ups from 11am. Return 2.30pm. £5 return transport

Tuesday 15 March
Three Course Elvis Tribute Social Event. 12pm-2pm. Free of charge.

Monday 21 March
Group Outing – White Rose Shopping Centre & Nando's Meal Out. Pick-ups from 10:00am. Return 3.30pm. £5 return transport.

Sunday 27th March
Two Course Sunday Lunch at St Matthews. Outreach Meal Delivery Available. £4.00. Transport available from home £3.50.

Monday 28 March
Group Outing to Showcase Cinema. Film, Collection & Return Time TBC. Return transport £5.

Proudly supporting the
Holbeck Together Newsletter

PIERRE ANGULAIRE



The Printworks Price Promise

By moving your print and design requirements under one roof, we can save you up to 30%* per year!

We offer...

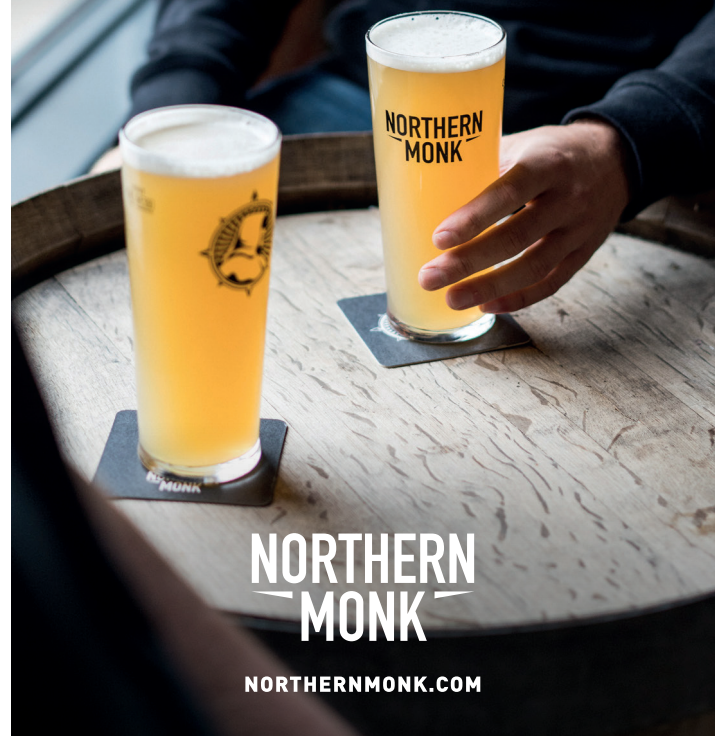
- ▶ Quality commercial print for all business sizes
- ▶ Print management services that can guarantee savings
- ▶ In-house graphic design studio



To discuss call us on 01937 585575
or email sales@printworksnorth.com

*Terms and conditions apply. Unit 2 Sandbeck Way, Wetherby, LS22 7DN

HOLBECK'S LOCAL BREWERY



**NORTHERN
MONK**

NORTHERNMONK.COM

Leeds United Foundation

Free Fitness sessions

Leeds United's official charity have launched a new Working Out Together programme that has been created to encourage our Leeds community to become more active in the New Year – through a relaxed, social, and friendly environment.



If you who are interested in signing up to the initiative, you will be able to take part in up to five different fitness sessions through the week, starting from Monday 10th January 2022. You will be able to work on your fitness levels whilst also making new friends with likeminded people in the local community, there is a class suitable for everyone.

Every Monday, from 5-6:30pm:

Whelan's Walking Club

Every Tuesday, from 6-7:30pm:

Revie's Running Club

Every Wednesday, from 5:15-6:15pm:

Charlton's Circuits

Every Thursday, from 6:30-7:30pm:

Strachen's Soccercie

Every Friday, from 2-4pm:

Speed's Social Club