



# Holbeck Together

## Winter Newsletter 2026

January –  
March

## Making it happen, together

As we move into 2026, we do so with real momentum and excitement for what lies ahead for the Holbeck Together community.

As mentioned in previous newsletters, we are a key partner in the Council's 'Levelling Up' investment in the area. After significant planning and partnership work throughout last year, 2026 will mark the start of renovations to the Old Box Office and the wider Domestic Street "campus". This investment will create more welcoming, accessible and flexible spaces — strengthening Holbeck Together as a community hub for years to come.

Wider plans for this investment include improving local green spaces and streets and tackling fuel poverty through home energy improvements. Leeds City Council are asking local residents to get involved by joining the Inclusive Design Panel to help shape designs for streets, parks, public spaces and buildings — ensuring they work for everyone.

If you'd like to be involved or find out more, visit: [heartofholbeck.commonplace.is](https://heartofholbeck.commonplace.is)

Looking back on 2025, we are proud of the impact we have made, particularly during the Christmas period. Over 200 Christmas hampers were delivered to older residents, and 750 toys were distributed to local families. These were small individual acts in the context of wider challenges, but they helped ease pressure and brought moments of relief and joy at a difficult time for many.

None of this happens by accident. Our staff team continues to go above and beyond every day. They work with integrity, compassion and determination — often in circumstances where demand far outstrips capacity.

2025 also saw important new partnerships develop. Our first business breakfast held at Leeds United Football Club, led to the launch of the Holbeck Together Business Alliance, including our first Alliance meeting of Leeds businesses' hosted by KPMG at their city offices. The response from corporate partners, particularly through our Winter Campaign, has been both generous and uplifting. We hope to build on this momentum in 2026 so we can reach even more people together.

**Wishing everyone a happy and healthy 2026.**



**Elissa Newman**  
Chief Officer  
Holbeck Together

### MAKING AN IMPACT IN 2025

10,000 Support phone calls offering reassurance and connection	5,700 People brought together through our groups and events	2,200 Doorstep conversations helped us reach people where they live	15,000 Attendances to St Matthews – remaining a vital hub
203 Children took part in Healthy Holidays	445 1-2-1 Outreach Support Meetings	6,800 Volunteer hours helped us run more support services	1,980 Visits to the Social Supermarket supporting families with affordable food
			254 Children and family members enjoyed a day out making memories



This festive season we hosted a series of events bringing older people together and sharing the warmth of community spirit.



We kicked off with a Lunch at Leeds United Football Club, where guests enjoyed a beautiful meal. Laughter and live entertainment set the tone for the Christmas season. Thank you to all the staff at Elland Road for hosting us and thank you to Addleshaw Goddard who generously donated a gift for every guest! (pictured above).



Clients also enjoyed wreath making. A huge thank you to Fox Lloyd Jones for sponsoring and helping at this event.



74 people enjoyed a Christmas Lunch which was generously provided by The Yorkshire Property Charitable Trust and catered by Leeds United Catering Department. A good time was had by all with a sing-along to festive classics and favourites. For many older people, winter can be a lonely time, but these gatherings brought warmth, connection, and a sense of belonging.



## A Festive Day at Sundown Adventureland

A full 57-seater coach, packed with excited children, parents and carers, drove out of Holbeck filled with laughter and anticipation on a festive trip to Sundown Adventureland to meet Santa and enjoy a magical family day out.

For many of the families who joined us, this trip was far more than just a day out. Attractions like Sundown Adventureland are often out of reach, especially in the weeks leading up to Christmas. The cost of tickets, transport, food, and the distance involved can make visiting places like this simply unaffordable and unachievable for many families — even more so at a time when household budgets are stretched to their limits.

Above all, the trip was about creating memories — moments that families can hold onto after the decorations come down.

Thank you to Leeds Building Society for supporting this trip.

“Today was so special. We’ve had a hard couple of months, and this trip has made our Christmas. Our family needed this day, we will remember it forever.”



# MAGICAL MOMENTS Christmas Light Switch-On

Our Christmas Lights Switch-On was a truly special occasion. It was made even more memorable with a visit from LUFC's Stuart Dallas, who kindly joined us to switch on the lights as the local community gathered to share the moment.

*Supported by LCC Inner South Community Committee*



## Breakfast with Santa



We hosted a magical Breakfast with Santa for our Parents and Tots Together group. 30 of our youngest clients and their grown-ups also came together to enjoy a truly special morning as St Matthews – a magical breakfast with Santa.

Biscuit decorating and festive crafts, where little hands got busy (and a bit messy!) creating

tasty treats, plus a delicious, cooked breakfast provided by our fantastic chef Steph made the event very special.

The highlight, of course, was the meet and greet with Santa himself. There were lots of smiles and excitement before Santa handed out soft toys for all the children.

We are incredibly grateful for the support of our corporate volunteers from Crowne Plaza Hotels and BAM, who helped ensure everything ran smoothly. Their involvement helped make the day extra special for our families.

“  
Santa is  
real – best  
day ever  
”

## MAGICAL MOMENTS Christmas Market

We held a hugely successful Christmas market at St Matthews which was sponsored by Right At Home Leeds. Everyone enjoyed the tasty treats, festive facepainting and tombolas – and of course the visit from Santa and his elves to our Christmas Grotto.

To round off the year, we held a Christmas social and a New Year's Eve celebration lunch. Everyone was in fine spirits to welcome in the New Year.



## LOOKING AHEAD

As we look forward to spring, there are still some challenging, cold months ahead — support is available.

## Would you like a home visit?

Do you know that alongside the wide range of services and activities at St Matthews Community Centre, we offer in-person home visits and household support to residents across Holbeck — especially for anyone who finds it difficult to get out and about.

### What are home visits?

Our home visits are designed to make sure that support reaches you where you are most comfortable — in your own home. Whether you're facing challenges with benefits, housing, health, or simply need a friendly chat and guidance, our community support team can come to you.

### These visits are a chance to:

- Understand your individual needs and concerns
- Explain the services Holbeck Together offers
- Help you connect to the right support — whether that's practical advice, referrals, or local services that can help you thrive
- Chat to us in confidence.

If you'd like a home visit or more information, you can get in touch with our Community Support Worker, Chris, by popping into our office, emailing [chris@holbecktogether.org](mailto:chris@holbecktogether.org), or calling 0113 245 5553.

## Need support with appointment and forms?



We can also help with Universal Credit/PIP forms, as well as scheduling and transportation to and from GP and hospital appointments.

## Leeds Community Hub Bus



The Leeds Community Hub Bus is still out and about, bringing advice and support to local communities visiting Holbeck Moor (LS11) on the following dates/ times:

### JOIN US

Tuesdays 9:30-3:30  
Thursdays 9:30-3:30

### SUPPORT INCLUDES

- Cost-of-living advice
- Housing and benefits support
- Wellbeing information



Our Winter campaign this year put a call out for local businesses to donate children's presents, hampers of food and other vital donations to help ease the pressures of Christmas for local families and older residents. The response was amazing and the generosity of our partners and supporters made such a meaningful difference to individuals.

We are incredibly grateful to all our partners for contributing: Crowne Plaza Hotel, SC Johnson, HG Construction, One Sub Sea, Leeds Building Society, Wates, Waingap, Iceland, Equans, Federated Hermes, Yorkshire Property Charitable Trust, Fox Lloyd Jones, Apple HR, Howard Civil, KPMG, Bam, Centrica (British Gas), Child Friendly Leeds, Boom Leeds, TransUnion, United Living, Quantuma, Boutique Media, Veterans in Need Together, Right at Home Leeds, Corstorphine and Wright, Wellington Place and many others who contributed their time, resources and generosity.

The Leeds United Academy Boys gave up their precious training time to support the delivery of our Winter hampers and spread some festive cheer to people in their homes.



5

## Pop into our Winter Welcome Space at St Matthews

Our staff will be hosting a warm welcoming space at St Matthews for anyone who needs somewhere safe and comfortable to go.

What's available at our Winter Welcome Space:

- A warm, welcoming place to relax
- Complimentary hot drinks and light refreshments
- Friendly staff and volunteers
- Social activities and support information

Every Monday • 1pm – 3pm,  
St Matthews • Holbeck

**NO BOOKING NEEDED. JUST DROP IN**

## Staying Well through Winter

A few simple steps can make a big difference during the colder months:





We are pleased to announce that Leanne Elliot, has been appointed to the role of Volunteer Engagement Officer. Leanne is here to support and grow our amazing team of volunteers.

The role focuses on recruiting new volunteers, matching people with opportunities that suit their skills and interests, and making sure volunteers feel supported, valued and confident in what they do.



Volunteers are at the heart of Holbeck Together and play a vital role in helping us support local people. Whether you're looking to give a little time or get more involved, there are lots of ways to help make a positive difference in the community.

"I'm excited to be moving into the Volunteer Engagement Officer role at Holbeck Together. Having already seen first-hand the incredible work happening across the service, I'm really looking forward to building on existing relationships, working more closely with our fantastic volunteers, and supporting even more people and businesses to get involved."

*Leanne Elliott, Volunteer Engagement Officer*

**Leanne is available**  
Tues & Thurs 8.30am – 4pm  
Fri 8.30am – 4pm



## INTERESTED IN VOLUNTEERING?

If you'd like to get involved in 2026, here are some ways you can help:



**Befriending and offering companionship**



**Helping at lunch clubs and community activities**



**Supporting the charity shop or social supermarket**



**Helping others build confidence with digital skills**



**Delivering newsletters locally**



**Assisting with outings or transport**

All roles are flexible, with training, induction and out-of-pocket expenses provided. No previous experience is needed – just a willingness to help.

Call Leanne on 0113 245 5553 to find out more.



WITH  
Sean

## PREPARE FOR THE DIGITAL SWITCHOVER

### What is the digital switchover

The UK telecoms industry is phasing out the analogue Public Switched Telephone Network (PSTN) and moving all voice telephony to digital networks. This affects landlines, telecare connections, alarm systems, CCTV, and other devices that rely on old copper phone lines. Completion is planned by 2027 with major activity already happening now.

### What do I need to do?

Providers will contact customers ahead of their switchover date and arrange any needed upgrades or engineer visits.

You should tell your provider if you or someone you support uses telecare, an alarm, or essential equipment connected to the phone line, this helps ensure they have the correct information and can provide the right support for you.

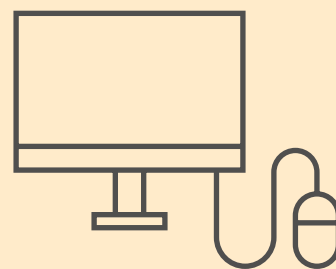
Customers needing extra help can visit the following website for more information

[www.bt.com/help/landline/moving-to-dv/being-moved-to-digital-voice](http://www.bt.com/help/landline/moving-to-dv/being-moved-to-digital-voice)

### Free Engineer Visits

BT offers a free visit to help set up your new service and ensure everything works.

BT will also be providing a dedicated service for those without broadband, letting them use their landline as normal until 2030 or until a digital solution is ready, so no one is left without a phone. If you are unsure how the switchover might affect you pop into the Digital Hub and have a chat with Sean, our Digital Inclusion Officer.



## DIGITAL HUB WELCOME SPACE

Join us on Tuesday mornings from 10am – 1pm to access our IT equipment, enjoy free coffee and biscuits and ask questions of our digital inclusion officer Sean.

### OUR GENERAL DIGITAL HUB OPENING TIMES ARE

Tues 9:00-1:00pm  
Thurs 9:00-1:00pm  
Fri 9:00-1:00pm

## MONEY MULES: WHAT YOU NEED TO KNOW

### What are they?

A money mule moves illegally obtained money for criminals through their bank account. Often recruited via fake job ads or social media scams promising easy cash, mules unknowingly participate in money laundering, funding crimes like fraud and drug trafficking. Being caught can lead to prison and serious financial consequences.

### How it works

Criminals target people online with fake job offers.

Mules receive criminal funds into their account and transfer it elsewhere, keeping a small cut. This disguises the money's illegal origin.

### Why people get involved

- Tempted by 'easy money' jobs.
- Tricked or manipulated via social media.
- Unaware they are committing a serious crime

### How to avoid it

- Be cautious of unsolicited job offers or 'easy money' schemes.
- Never move money for strangers.
- Report suspicious activity to your bank or the police.

## Humbled by your generosity... one mum's thank you

This festive season, Holbeck Together worked in collaboration with Child Friendly Leeds, Boom Leeds and Wellington Place to alleviate financial pressures for many families in the Beeston and Holbeck area by providing over 750 gifts to young families. Gifts were provided to local families through Holbeck Togethers wider work and 7 local primary schools. This feedback from one local mum highlights the impact of the support and donations made:



"Thank you so much for the kids gifts it really makes a difference. I walked in this morning weighed down with anxiety when I really should be looking forward to Christmas.

My youngest is 7 and I know from having older teenagers this magical Christmas phase doesn't last for long. I only had two options this year either take away the magic and tell my daughter Santa isn't real, because she knows you don't get gifts if you're on the naughty list and I couldn't bare her to think she was on the naughty list, or the second option that my teen boys agreed with, was they'd have a couple of cheap wrap ups and we'd make sure the youngest got her gifts from Santa! I was so proud of them. When Holbeck together said they could help with gifts I was happy because it meant if she was taken care of and I could use some of the money I had to get the boys a few bits.

I was so grateful and amazed when I saw not only the beautiful gifts for my daughter but also my two boys. I about cried when I saw the Nike socks and proper lynx! Not to mention the other lovely items. Now I have a little spare to buy them some treats eat at home (tin of Cadbury heroes, pringles and PROPER coke).

Thank you so much for lifting the weight off my shoulders and I'm now genuinely happy and excited for Christmas. I'm really humbled that in such challenging financial times, people have been so generous with their gifts, and this is truly the true meaning of Christmas, generosity, kindness and goodwill to all men. I hope the generous donators have the best Christmas and that their kindness is returned to them tenfold. Merry Christmas!"



COMING UP  
AT ST MATTHEWS

## SALSA LESSONS

Every Thursday  
15th Jan - 19th March  
4.30pm - 5.30pm

## STILL SUNDAY YOGA

FREE

Prioritise your wellbeing with Still Sunday — a gentle yoga session designed to support physical recovery, mental clarity, and emotional balance at the end of your week.

No prior yoga experience needed. Age 16+. All bodies and backgrounds welcome. Leave feeling refreshed, grounded, and ready for the week ahead.

Sun 11th Jan 2026  
10am - 11am

Sun 25th Jan 2026  
10am - 11am

Sun 8th Feb 2026  
10am - 11am

Sun 22nd Feb 2026  
10am - 11am

Sun 8th March 2026  
10am - 11am

Sun 22nd March 2026  
10am - 11am



MONDAY	TUESDAY	WEDNESDAY	THURSDAY	FRIDAY
Parents & Tots (Term time only) St Matthews 9:30am-11:00am  Provided by Better Together	Coffee Shop St Matthews 10:00am-12:00pm Various Prices  Digital Hub Welcome Space 10:00am-12:00pm St Matthews Free of Charge (Until 26 <sup>th</sup> Feb)	Coffee Morning Ingram Court 10:00am-12:00pm £1.50 per person  Shopping to Morley Town Centre 9:30am collect 1:30pm return £7.00 Transport  28 Jan, 11 Feb, 25 Feb, 11 Mar, 25 Mar	Holbeck Community Shop St Matthews 9:30am-2:00pm £4.00 for 14 Food Items	Coffee Shop St Matthews 10:00am-12:00pm Various Prices
			Coffee Shop St Matthews 9:45am-11:30pm Various Prices	
Coffee Shop St Matthews 10:00am-12:00pm Various Prices	Allotment Group 10:00am-12:00pm Call Marie on 0113 245 5553 for further details  Provided by Being You Leeds		Line Dancing St Matthews 11:30am-12:30pm £2.50 per person	Baby Steps: Parents and Buggies Walking Group St Matthews 9:30am onwards
	Chair Based Exercise Wellness Activity St Matthews 10:45am-11:30am £3.00 per person			Men's Group Ingram Gardens 10:00am-12:00pm Free of Charge
Charity Shop St Matthews 11:30am-3:00pm	Charity Shop St Matthews 10:00am-12:00pm and 1:00pm-2:00pm	Shopping to Owlcoates Shopping Centre 9:30am collect 1:30pm return £7.00 Transport  21 Jan, 4 Feb, 18 Feb, 4 Mar, 18 Mar	Charity Shop St Matthews 10:00am-12:00pm and 1:00pm-2:00pm	Dance On Yorkshire Dance St Matthews 10:00am-11:00am Free of Charge  55+
		Charity Shop St Matthews 11:30am-3:00pm		
2-Course Lunch Delivery 11:45am-1:00pm £6.00  Supper Sandwich Meal Deal available for additional £3.50  55+	2-Course Lunch Delivery 11:45am-1:00pm £6.00  Supper Sandwich Meal Deal available for additional £3.50  55+	2-Course Lunch Delivery 11:45am-1:00pm £6.00  Supper Sandwich Meal Deal available for additional £3.50  55+	2-Course Lunch Delivery 11:45am-1:00pm £6.00  Supper Sandwich Meal Deal available for additional £3.50  55+	Fish & Chip Lunch Delivery 12:00pm-1:30pm From £6.50  Supper Sandwich Meal Deal available for additional £3.50  55+
2-Course Lunch St Matthews 12:00pm-1:00pm £5.00  55+	3-Course Lunch St Matthews 12:00pm-1:15pm £6.00  55+	3-Course Lunch Ingram Court 12:00pm-1:15pm £6.00  55+	Memories Café St Matthews 2:00pm-3:30pm Fortnightly	3-Course Fish & Chips St Matthews 11:30am-1:15pm From £6.50  55+
Welcome Space St Matthews 1:00pm- 3:00pm	Friendship Club Afternoon St Matthews 1:15pm-2:45pm £2.50 per person	Craft Group Afternoon Ingram Court 1:15pm-2:45pm £2.50 per person		Dance Class - Salsa St Matthews 4:30pm-5:30pm Free of Charge – Being You Leeds
		Arts & Craft Evening Fortnightly 5:00pm-7:00pm St Matthews Free of Charge – Being You Leeds		
		Games Night Fortnightly 5:00pm-7:00pm St Matthews Free of Charge – Being You Leeds		

Return transport to and from your home is available for £5 per person

# Events and Outings

DATE	EVENT	PRICE
Thurs 15 <sup>th</sup> Jan	Salsa Dance Lessons – No experience needed St Matthews C.C. 4:30-5:30pm	FREE
Mon 19 <sup>th</sup> Jan	Group Outing – Showcase Cinema Outing, Birstall Pick-up / Drop off times TBC – dependent on film show times	£8.00 Return Transport
Thurs 22 <sup>nd</sup> Jan	Salsa Dance Lessons – No experience needed St Matthews C.C. 4:30-5:30pm	FREE
Sat 24 <sup>th</sup> Jan	Group Outing – Roy's Mystery Tour Pick-ups from 9:00am. Return approx. 3:00pm	£20.00 Return Transport
Sun 25 <sup>th</sup> Jan	Still Sunday Yoga — Age 16+, St Matthews C.C 10:00am-11:00am	FREE
Mon 26 <sup>th</sup> Jan	Film Show Afternoon – Wicked – inc. Popcorn & Refreshments – Over 55's St Matthews C.C. 1:00pm-4:00pm	£3.00 per activity
Tues 27 <sup>th</sup> Jan	3-Course Lunch with Live Entertainment – 'Elvis' St Matthews C.C. 12:00pm-2:30pm	FREE
Wed 28 <sup>th</sup> Jan	Have your say! Client feedback morning – free cuppa and cake! No booking required everyone welcome. St Matthews C.C. 10:00am-11:30am	FREE
Thurs 29 <sup>th</sup> Jan	Salsa Dance Lessons – No experience needed St Matthews C.C. 4:30-5:30pm	FREE
Mon 2 <sup>nd</sup> Feb	Group Outing – Pub Meal at Bridgewater Arms and Bowling at Hollywood Bowl, Kirkstall Pick-ups from 10:00am at St Matthews C.C. Return approx. 3:30pm	£10.00 Return Transport
Thurs 5 <sup>th</sup> Feb	Salsa Dance Lessons – No experience needed St Matthews C.C. 4:30-5:30pm	FREE
Sun 8 <sup>th</sup> Feb	Still Sunday Yoga — Age 16+, St Matthews C.C 10:00am-11:00am	FREE
Thurs 12 <sup>h</sup> Feb	Well-Being Breakfast Morning. No booking required, everyone welcome St Matthews C.C. 10am-11am	£2.00 per person 'Kids Eat Free'
Thurs 12 <sup>th</sup> Feb	Salsa Dance Lessons – No experience needed St Matthews C.C. 4:30-5:30pm	FREE
Fri 13 <sup>th</sup> Feb	Love is in the air – 2-Course Valentines Lunch – Fish & Chips with Valentines Dessert St Matthews C.C. 11:45am-1:00pm	Various Prices
Sat 14 <sup>th</sup> Feb	Saturday Shopping to Crossgates with Roy Pick-ups from 9:30am. Return approx. 1:00pm	£7.00 Return Transport
Tues 17 <sup>th</sup> Feb	Shrove Tuesday – Make your own Breakfast Pancake St Matthews C.C. 9:30am-11:00am	£2.00 per person
Thurs 19 <sup>th</sup> Feb	Salsa Dance Lessons – No experience needed St Matthews C.C. 4:30-5:30pm	FREE
Sun 22 <sup>nd</sup> Feb	Still Sunday Yoga — Age 16+, St Matthews C.C 10:00am-11:00am	FREE
Mon 23 <sup>rd</sup> Feb	Group Outing – Showcase Cinema Outing, Birstall Pick-up / Drop off times TBC – dependent on film show times	£8.00 Return Transport
Tues 24 <sup>th</sup> Feb	3-Course Lunch with Live Entertainment – 'Neil Diamond' St Matthews C.C. 12:00pm-2:30pm	FREE
Wed 25 <sup>th</sup> Feb	Have your say! Client feedback morning – free cuppa and cake! No booking required everyone welcome. St Matthews C.C. 10:00am-11:30am	FREE
Thurs 26 <sup>th</sup> Feb	Salsa Dance Lessons – No experience needed St Matthews C.C. 4:30-5:30pm	FREE
Sat 28 <sup>th</sup> Feb	Group Outing – Roy's Mystery Tour Pick-ups from 9:00am. Return approx. 3:00pm	£20.00 Return Transport
Thurs 5 <sup>th</sup> Mar	Salsa Dance Lessons – No experience needed St Matthews C.C. 4:30-5:30pm	FREE
Sun 8 <sup>th</sup> Mar	Still Sunday Yoga — Age 16+, St Matthews C.C 10:00am-11:00am	FREE
Mon 9 <sup>th</sup> Mar	Group Outing – Junction 32, Castleford Pick-ups from St Matthews at 9:00am. Return approx. 3:00pm	£11.00 Return Transport
Thurs 12 <sup>th</sup> Mar	Well-Being Breakfast Morning. No booking required, everyone welcome St Matthews C.C. 10:00am-11:00am	£2.00 per person 'Kids Eat Free'



DATE	EVENT	PRICE
Thurs 12 <sup>th</sup> Mar	Salsa Dance Lessons – No experience needed St Matthews C.C. 4:30-5:30pm	FREE
Sat 14 <sup>th</sup> Mar	Saturday Shopping to Crossgates with Roy Pick-ups from 9:30am. Return approx. 1:00pm	£7.00 Return Transport
Thurs 19 <sup>th</sup> Mar	Salsa Dance Lessons – No experience needed St Matthews C.C. 4:30-5:30pm	FREE
Sun 22 Mar	Still Sunday Yoga — Age 16+, St Matthews C.C 10:00am-11:00am	FREE
Mon 23 <sup>rd</sup> Mar	Group Outing – Showcase Cinema Outing, Birstall Pick-up / Drop off times TBC – dependent on film show time	£8.00 Return Transport
Wed 25 <sup>th</sup> Mar	Have your say! Client feedback morning – free cuppa and cake! No booking required everyone welcome. St Matthews C.C. 10:00am-11:30am	FREE
Sat 28 <sup>th</sup> Mar	Group Outing – Roy's Mystery Tour Pick-ups from 9:00am. Return approx. 3:00pm	£20.00 Return Transport
Tues 31 <sup>st</sup> Mar	3-Course Easter Lunch St Matthews C.C. 12:00pm-1:30pm	£6.00 per lunch

## TUESDAY FRIENDSHIP GROUP SCHEDULE

DATE	EVENT	PRICE
Tues 13 <sup>th</sup> Jan	Friendship Club – Music Quiz and Abba Singalong Afternoon with Sue & Geoff – Over 55's Refreshments available. St Matthews C.C. 1:30pm-3:00pm	FREE
Tues 20 <sup>th</sup> Jan	Friendship Club – Prize Bingo Afternoon, refreshments included, Over 55's St Matthews C.C. 1:15pm-2:45pm	£2.00 per person
Tues 27 <sup>th</sup> Jan	3-Course Lunch with Live Entertainment – 'Elvis' St Matthews C.C. 12:00pm-2:30pm	FREE
Tues 3 <sup>rd</sup> Feb	Friendship Club – Play Your Cards Right & Hangman Afternoon, refreshments included, Over 55's St Matthews C.C. 1:15pm-2:45pm	£2.00 per person
Tues 10 <sup>th</sup> Feb	Friendship Club – Music Quiz and Elvis Singalong Afternoon with Sue & Geoff – Over 55's Refreshments available. St Matthews C.C. 1:30pm-3:00pm	FREE
Tues 17 <sup>th</sup> Feb	Friendship Club – Chinese New Year Cultural Activity Afternoon – The Year of the Horse St Matthews C.C. 1:15pm-2:45pm	£2.00 per person
Tues 24 <sup>th</sup> Feb	3-Course Lunch with Live Entertainment – 'Neil Diamond' St Matthews C.C. 12:00pm-2:30pm	FREE
Tues 3 <sup>rd</sup> Mar	Friendship Club – Make Your Own Friendship Jewellery Activity, refreshments included, Over 55's St Matthews C.C. 1:15pm-2:45pm	£2.00 per person
Tues 10 <sup>th</sup> Mar	Friendship Club – Music Quiz and Cliff Richard Singalong Afternoon with Sue & Geoff – Over 55's Refreshments available. St Matthews C.C. 1:30pm-3:00pm	FREE
Tues 17 <sup>th</sup> Mar	Eid Mubarak Activity and Celebration Afternoon St Matthew C.C. 1:15pm-2:45pm	FREE
Tues 24 <sup>th</sup> Mar	Friendship Club – Prize Bingo Afternoon, refreshments included, Over 55's St Matthews C.C. 1:15pm-2:45pm	£2.00 per person
Tues 31 <sup>st</sup> Mar	Friendship Club – Easter Craft Activity Afternoon St Matthews C.C. 1:15pm-2:45pm	£2.00 per person

## FAMILY FRIENDLY EVENTS SCHEDULE

DATE	EVENT	PRICE
Thurs 12 <sup>h</sup> Feb	Well-Being Breakfast Morning. No booking required, everyone welcome St Matthews C.C. 10am-11am	£2.00 per person 'Kids Eat Free'
Mon 16 <sup>th</sup> Feb – Thurs 19 <sup>th</sup> Feb	Healthy Holidays Activity Days Lane End Primary School. 8:30am-3:00pm. Please book via Leeds City Council Website	FREE
Thurs 12 <sup>th</sup> Mar	Well-Being Breakfast Morning. No booking required, everyone welcome St Matthews C.C. 10:00am-11:00am	£2.00 per person 'Kids Eat Free'

## Rest, Recharge and Feel at Home

Enjoy  
**£250 OFF**

when you book a  
minimum 2-week  
respite stay\*

Whether you're looking for a short break, recovery time after illness, or peace of mind while family are away, Pennington Court in Leeds is here for you.

### Feel truly at home, with:

- ★ Compassionate care tailored to your needs
- ★ Comfortable, welcoming rooms
- ★ Freshly prepared, nutritious meals every day
- ★ Engaging activities to enjoy at your pace
- ★ Supportive staff available 24/7

**Call us today on 0113 228 4040  
to reserve your stay.**

\*Offer available on respite stays booked between 1 January 2026 – 31 March 2026.  
Minimum two week stay required to qualify for the offer.



Pennington Court  
BEESTON



### What our guests say:

"The staff in all departments are very friendly and really helpful and all go above and beyond to make Dad feel comfortable and cared for, nothing is too much trouble." Daughter of Resident

## TRUSTED CARE & COMPANIONSHIP IN YOUR OWN HOME Right at Home Leeds East

Covering: Leeds East, Chapel Allerton,  
Headingley, Moortown, Roundhay, Oulton,  
Rothwell and surrounding areas



**Right  
at  
Home**  
Quality Care In Your Home

### Our services include:

Companionship, Personal Care, Dementia Care & much more

- Our care is person-centred: every care plan is bespoke and personalised
- We aim not just to maintain Clients' quality of life, but to improve it
- All Clients are introduced to their CareGivers in advance
- Our care calls are never rushed, so you get the most out of every moment
- One hour minimum up to 24 hour and live-in care

Regulated by  
**CareQuality  
Commission**

Contact us today: **0113 833 1950**  
**[www.rightathome.co.uk/leeds-east](http://www.rightathome.co.uk/leeds-east)**

Call now for a  
**FREE**  
care assessment